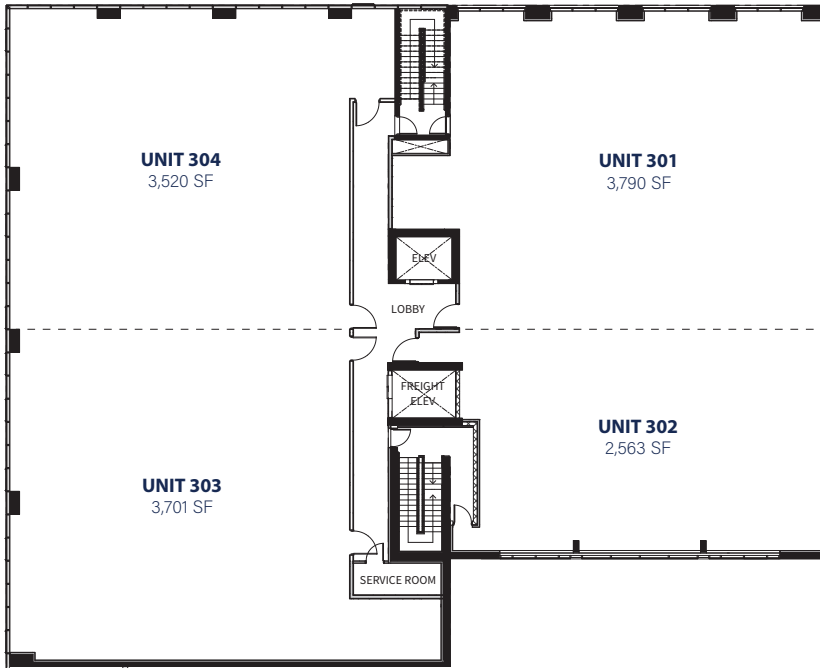


LEVEL 3



FLOOR PLAN LEVEL 3

TOTAL SIZE 13,574 SF
UNIT SIZES 2,563 - 3,790 SF

| UNIT # | TOTAL SF |
|--------|----------|
| 301 | 3,790 |
| 302 | 2,563 |
| 303 | 3,701 |
| 304 | 3,520 |

UNIONALLIED **CBRE**
CAPITAL CORPORATION

1021 West Hastings Street, Suite 2500
 Vancouver, BC V6E 0C3
www.cbre.ca

The developer reserves the right to make changes and modifications to the information contained herein without prior notice. Artistic renderings are representational only and may not be accurate. Sizes, dimensions, and materials are approximate and plans may be mirrored. This is not an offering for sale. Such an offering can only be made by a disclosure statement. E.&O.E.

This disclaimer shall apply to CBRE Limited, Real Estate Brokerage, and to all other divisions of the Corporation; to include all employees and independent contractors ("CBRE"). The information set out herein, including, without limitation, any projections, images, opinions, assumptions and estimates obtained from third parties (the "Information") has not been verified by CBRE, and CBRE does not represent, warrant or guarantee the accuracy, correctness and completeness of the Information. CBRE does not accept or assume any responsibility or liability, direct or consequential, for the information or the recipient's reliance upon the Information. The recipient of the Information should take such steps as the recipient may deem necessary to verify the Information prior to placing any reliance upon the Information. The Information may change and any property described in the Information may be withdrawn from the market at any time without notice or obligation to the recipient from CBRE. CBRE and the CBRE logo are the service marks of CBRE Limited and/or its affiliated or related companies in other countries. All other marks displayed on this document are the property of their respective owners. All Rights Reserved.

